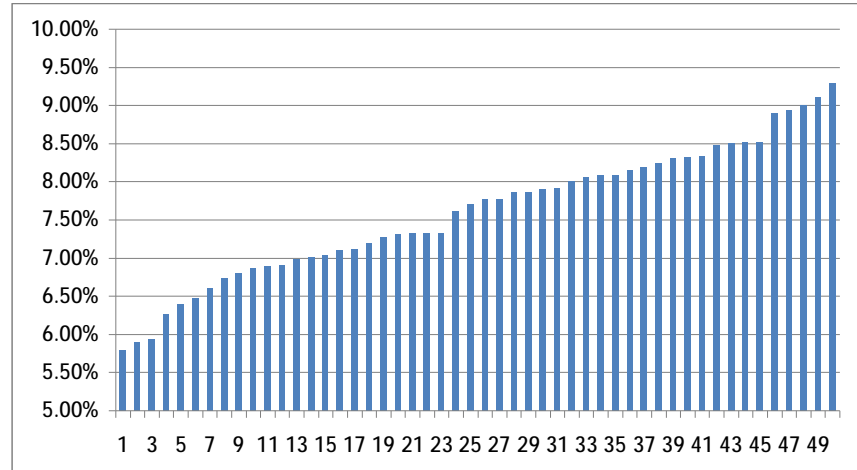


Currently Proposed Rent Increases by CIHConsult's Local Authority Clients (as at 29.11.11 - Excluding EFDC's and not showing other LA names)

Authority	Rent Increase	Authority	Rent Increase
1	7.70%	30	5.94%
2	9.29%	31	5.90%
3	9.00%	32	8.47%
4	7.86%	33	5.80%
5		34	6.47%
6	8.52%	35	9.10%
7		36	6.27%
8	8.09%	37	7.32%
9	6.99%	38	7.01%
10	8.51%	39	7.10%
11	6.74%	40	8.34%
12	8.00%	41	7.91%
13	8.32%	42	6.80%
14	6.87%	43	7.33%
15		44	8.09%
16	7.12%	45	8.25%
17	6.60%	46	8.52%
18		47	7.27%
19	7.04%	48	7.77%
20	8.20%	49	7.31%
21	6.91%	50	8.06%
22	7.77%	51	7.61%
23		52	7.86%
24	6.89%	53	8.15%
25	7.90%	54	7.20%
26	7.33%		
27	8.94%		
28	8.89%		
29	6.40%		
30	8.31%		



Minimum Increase	5.80%
Maximum increase	9.29%
Average increase	7.60%

